

V Series 20ft. Modular Wall Design 17

The innovative, contemporary and clean appearance of the V Series line of exhibit designs will captivate your audience. Design feature push-fit fabric graphics, easy-to-assemble extrusion frames, accent lighting, tables, counters, literature accessories, monitor mounts and interior LED edge lighting where indicated.



features and benefits:

- 50mm silver extrusion frame
- Single-sided SEG dye-sublimated push-fit fabric graphics
- Includes four literature racks
- Design includes frame, five fabric graphic panels, four rigid graphic wing accents, four 120 watt lights, four literature pockets and two wheeled molded cases
- Lifetime hardware warranty against manufacturer defects

dimensions:

Hardware

Assembled unit:
221.25" w x 102" h x 27.75" d 5620mm(w)
x 2591mm(h) x 705mm(d)

Graphic

Refer to related graphic templates for more information

Shipping

Shipping dimensions - ships in 2 cases: Two OCH2 cases:
52" l x 29" h x 15" d
1321mm(l) x 737mm(h) x 381mm(d)

Approximate shipping weight (entire kit):
179.2 lbs / 81.3 kgs

additional information:

Graphic material:
Dye-sublimated fabric, rigid sintra graphics

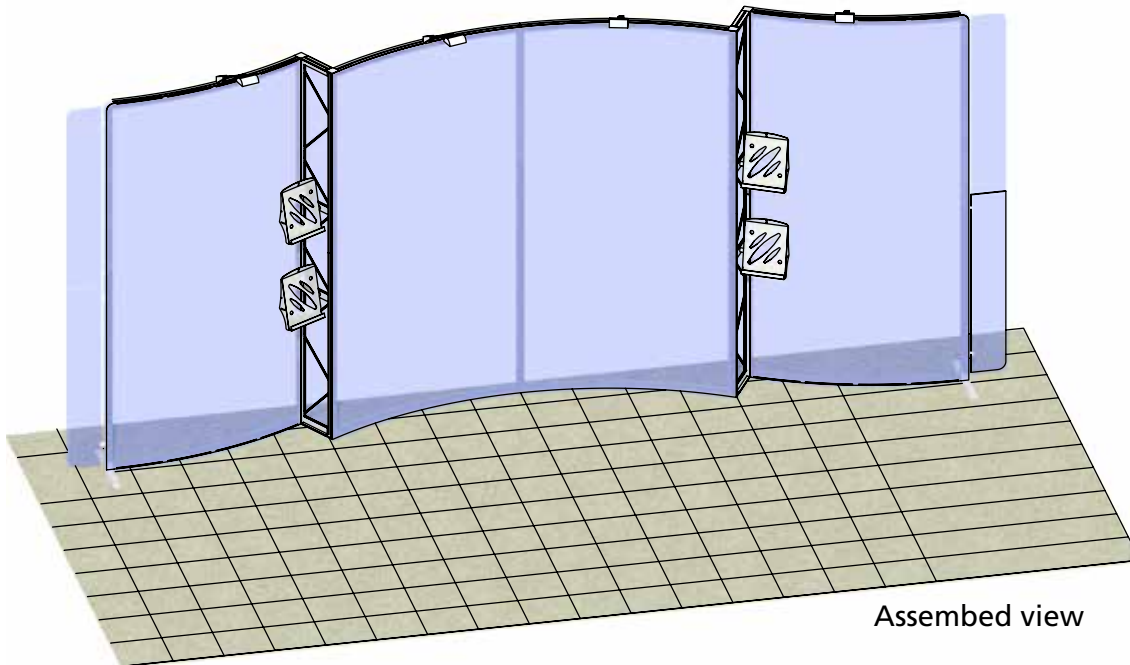
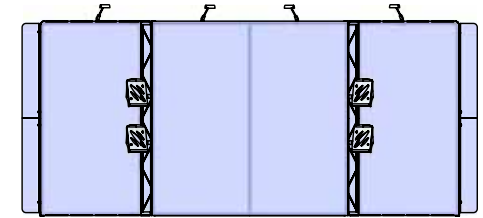
Lights Included:
Lumina 200 120 watt floodlight, curved arm, black finish, 19.5" from end to end

We are continually improving and modifying our product range and reserve the right to vary the specifications without prior notice. All dimensions and weights quoted are approximate and we accept no responsibility for variance. E&OE. See Graphic Templates for graphic bleed specifications.

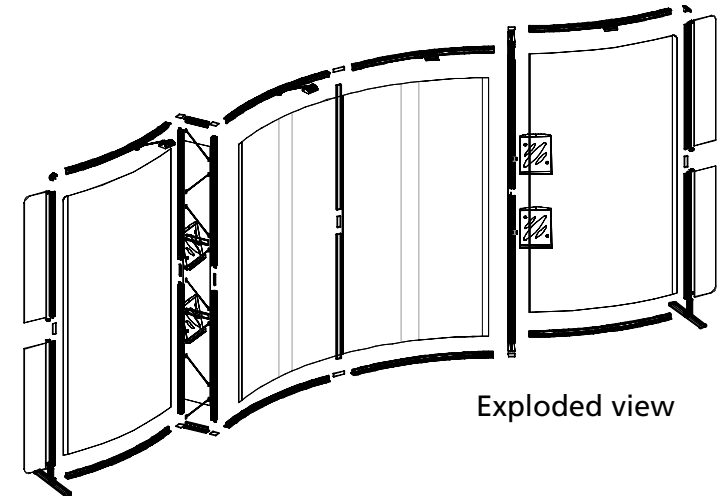
Parts Included:

| Code | Qty | Description |
|----------------------------|-----|--|
| VF-K-17-A-G | x1 | 210MM (8.26")W X 1150MM (45.27")H PVC GRAPHIC |
| VF-K-17-B-G | x1 | 210MM (8.26")W X 1150MM (45.27")H PVC GRAPHIC |
| VF-K-17-C-G | x1 | 1289MM (50.75")W X 2400MM (94.5")H FABRIC GRAPHIC W/FCE-2 ALL SIDES |
| VF-K-17-D-G | x1 | 260MM (10.25")W X 2400MM(94.5")H FABRIC GRAPHIC W/FCE-2 ALL SIDES |
| VF-K-17-E-G | x1 | 2527MM (99.5")W X 2400MM (94.5")H FABRIC GRAPHIC W/FCE-2 ALL SIDES |
| VF-K-17-F-G | x1 | 260MM (10.25")W X 2400MM(94.5")H FABRIC GRAPHIC W/FCE-2 ALL SIDES |
| VF-K-17-G-G | x1 | 1289MM (50.75")W X 2400MM (94.5")H FABRIC GRAPHIC W/FCE-2 ALL SIDES |
| VF-K-17-H-G | x1 | 210MM (8.26")W X 1150MM (45.27")H PVC GRAPHIC |
| VF-K-17-I-G | x1 | 210MM (8.26")W X 1150MM (45.27")H PVC GRAPHIC |
| F51 | x4 | 8R X 30 DEGREE PHFC2 EXTRUSION - WITH CAM LOCKS BOTH ENDS |
| F22 | x8 | 1193MM (46.97") PMFC2-90 EXTRUSION - WITH IB2 LOCK HOLES BOTH SIDES |
| F49 | x4 | 8R X 30 DEGREE EXTRUSION WITH LOCK ONE SIDE - WITH IB2 LCOK HOLES ONE SIDE |
| F34 | x4 | 1155MM (45.47") PHFC2 EXTRUSION - WITH IB2 HOLE ONE SIDE - WITH LOCK ONE END |
| VE-75 | x4 | 210MM (8.27") PH EXTRUSION WITH LOCK TWO ENDS |
| VE-85 | x2 | 1155MM (45.47") LENGTH OF PH1 EXTRUSION - WITH IB2 LOCK HOLES ONE SIDE - SLIDE LOCK ONE SIDE |
| SW-FOOT | x2 | VECTOR FRAME SUPPORT FOOT |
| IB2 | x8 | PH INLINE CONNECTOR |
| CB9-R | x2 | 50MM ROUND PHCF2 CORNER BRACKET |
| CB9-S | x2 | 50MM SQUARE PHCF2 CORNER BRACKET |
| LUM-200-ORL-B LN-3P-LT-FXT | x4 | BLACK 200W HALOGEN LIGHT FIXTURE ETL APPROVED |
| PMFC2-90-CAP | x8 | PMFC2 90 DEGREE EXTRUSION CAP |
| LN112 | x4 | A4 UNIVERSAL LITERATURE HOLDER |
| STS-1 | x16 | SLIM TRUSS SPACER |
| CKSO | x4 | 1" x 1" STANDOFF |
| PANEL CLAMP | x8 | 7MM PLASTIC MOLDED PANEL CLAMP |

VF-K-17



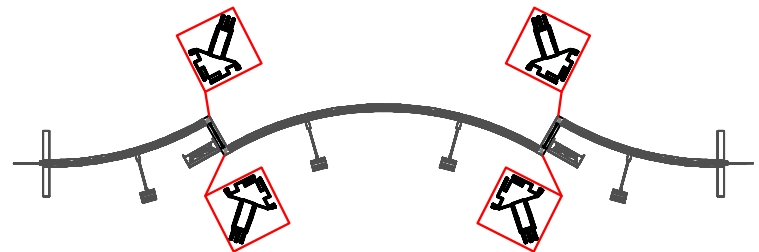
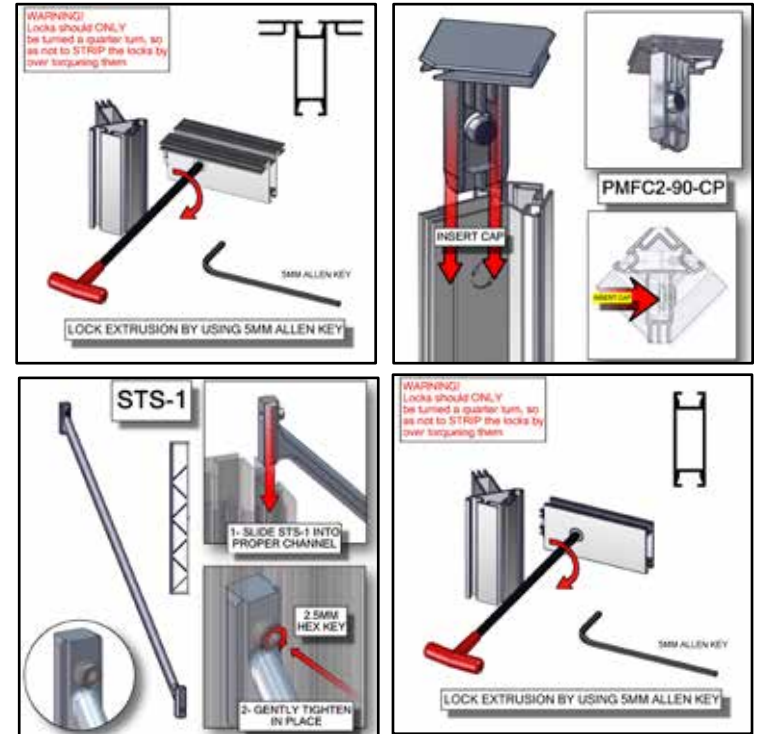
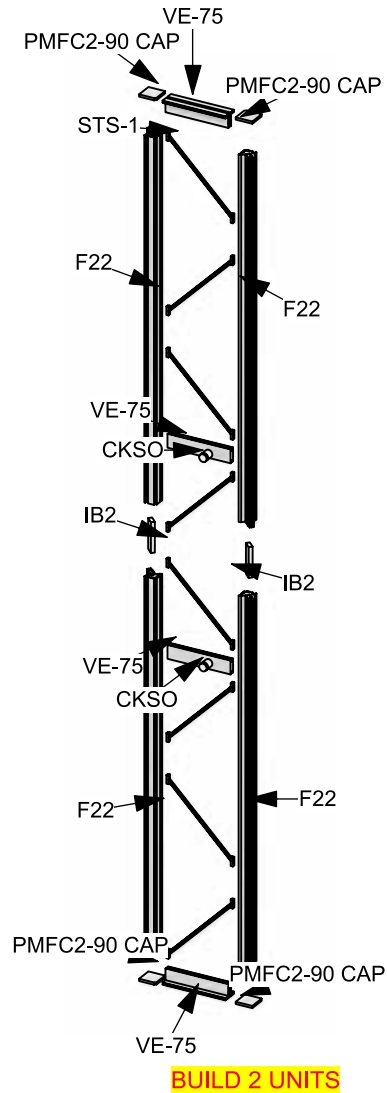
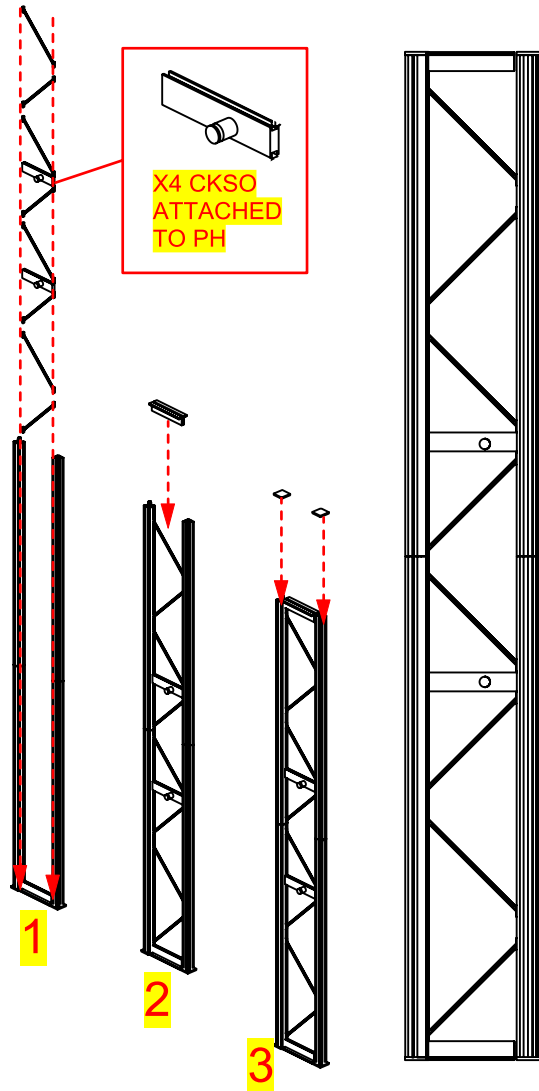
Assembled view



Exploded view

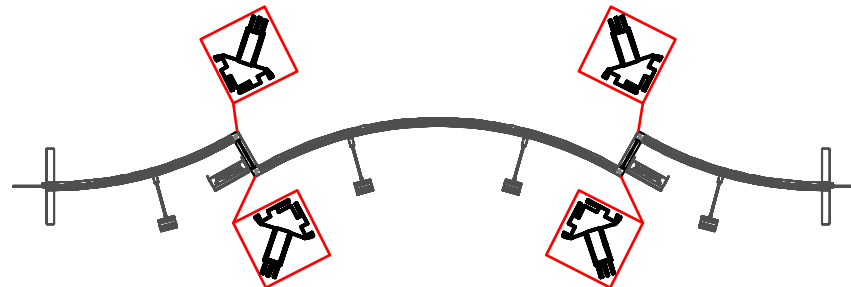
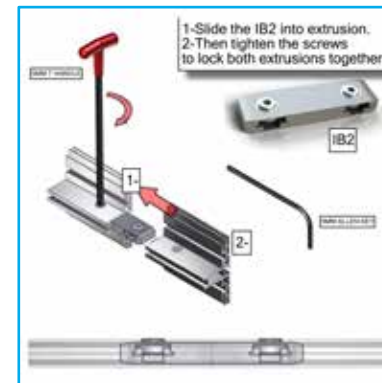
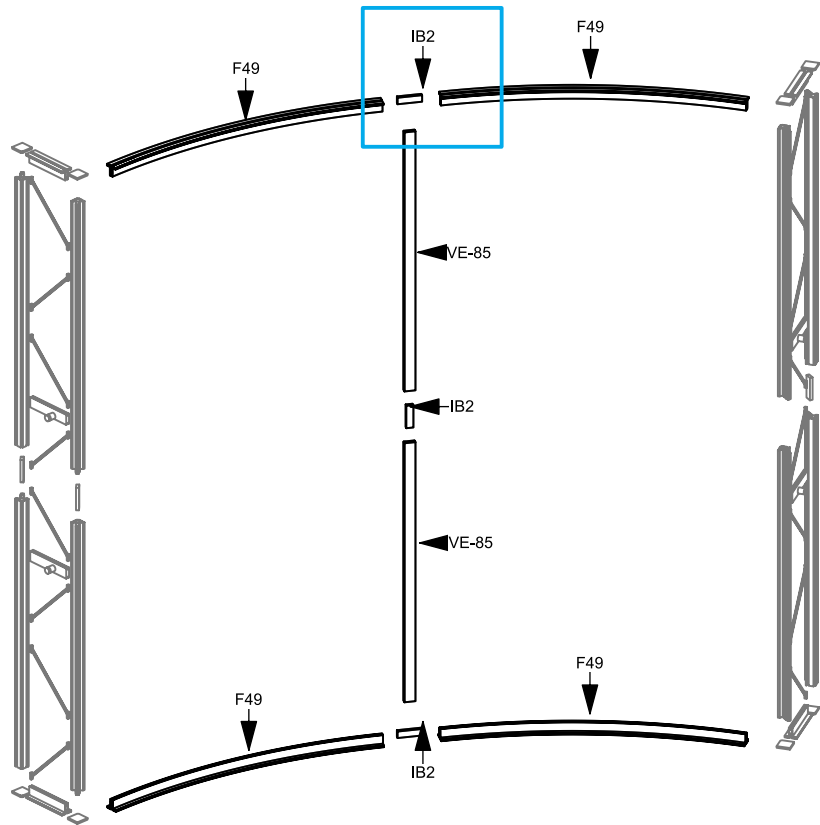
Step 1: Assemble Truss Section

Arrange pieces on the floor as shown in the diagram below. When locking be sure to turn each cam a little bit and then go back and tighten to the proper tension. Take care to turn locks only half a turn. Slide the IB2 into the extrusion to connect sides. Tighten to the proper tension to lock extrusions together.



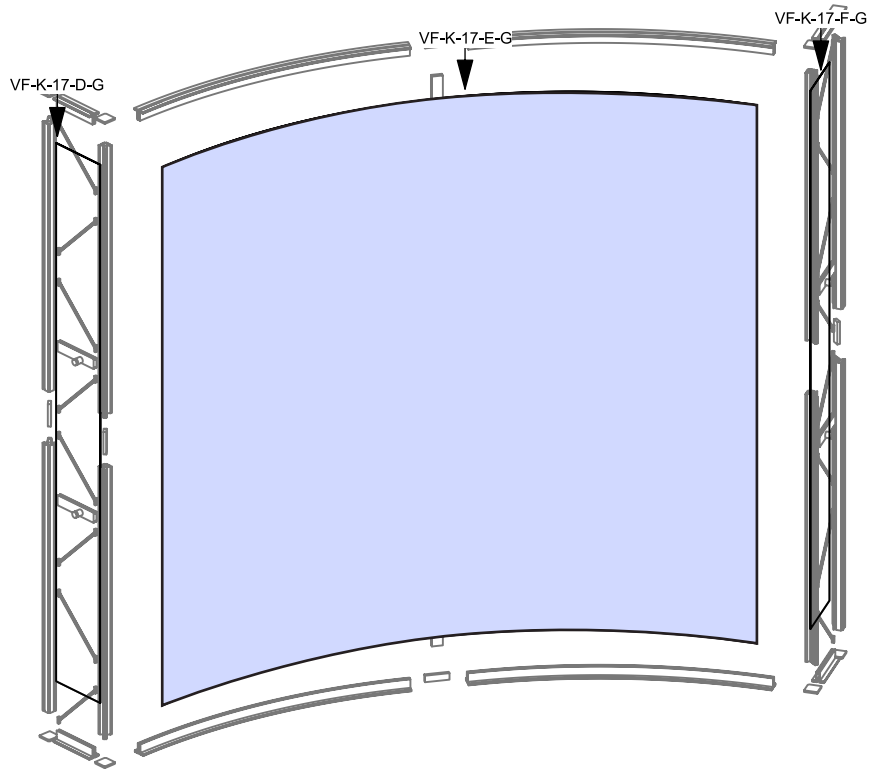
Step 2: Assemble Center Sections

Arrange pieces on the floor as shown in the diagram below. Assemble frame by securing F49 and VE-85s to the truss section. When locking be sure to turn each cam a little bit and then go back and tighten to the proper tension. Take care to turn locks only half a turn. Slide the IB2 into the extrusion to connect sides. Tighten to the proper tension to lock extrusions together. When connecting center sections to truss section, CKSO on truss section should face front, so literature racks will be in front of VF-K-18-D-G.

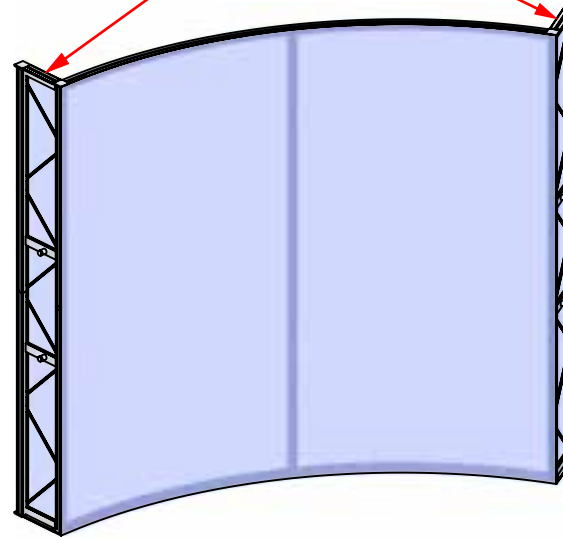


Step 3: Apply Graphics

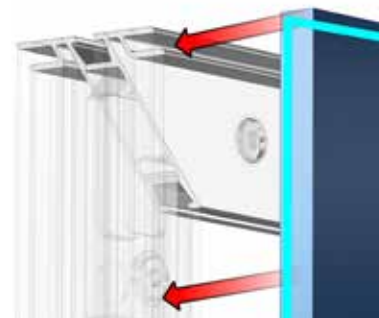
Install graphic(s) by pressing the FCE-2 edge of graphic into the channel of the extrusion. Start in upper left corner and insert in remaining corners, then push graphic into each side. Assure graphic is tightly inserted. When taking graphics off, take care to gently pull by attached pull tab.



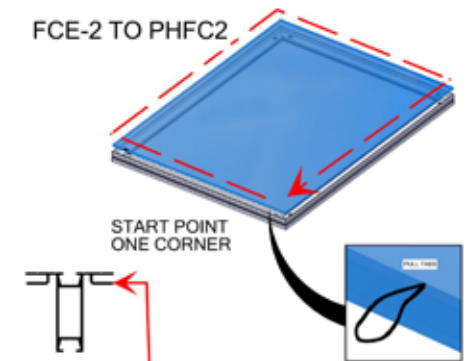
**INSTALL
FABRIC ON THE
BACKSIDE**



FCE-2 TO PHFC2



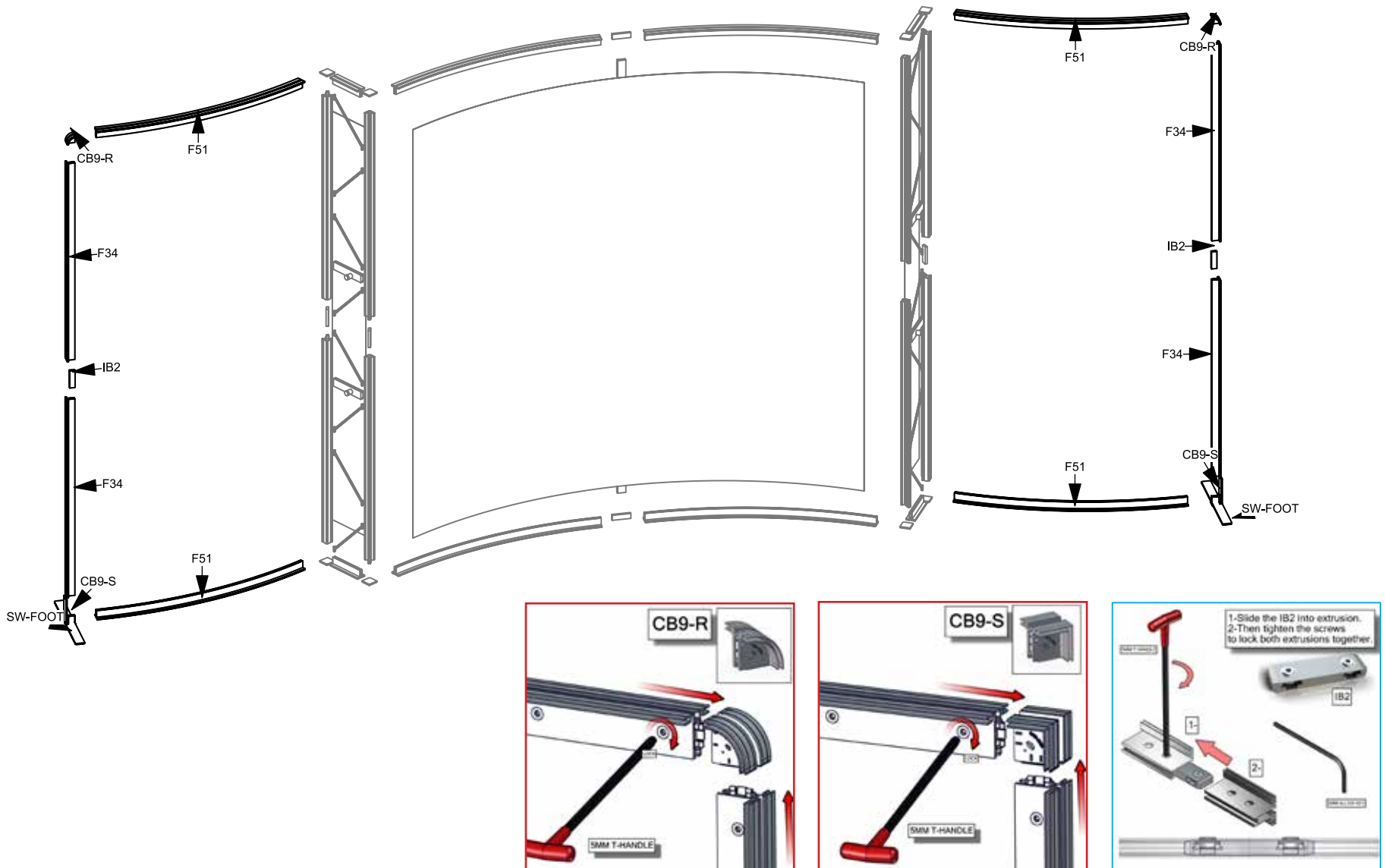
FCE-2 TO PHFC2



Install graphic by pressing the FCE-2 into the channels of PHFC2 extrusion. To pull graphics out of the channels, use tabs on the front side

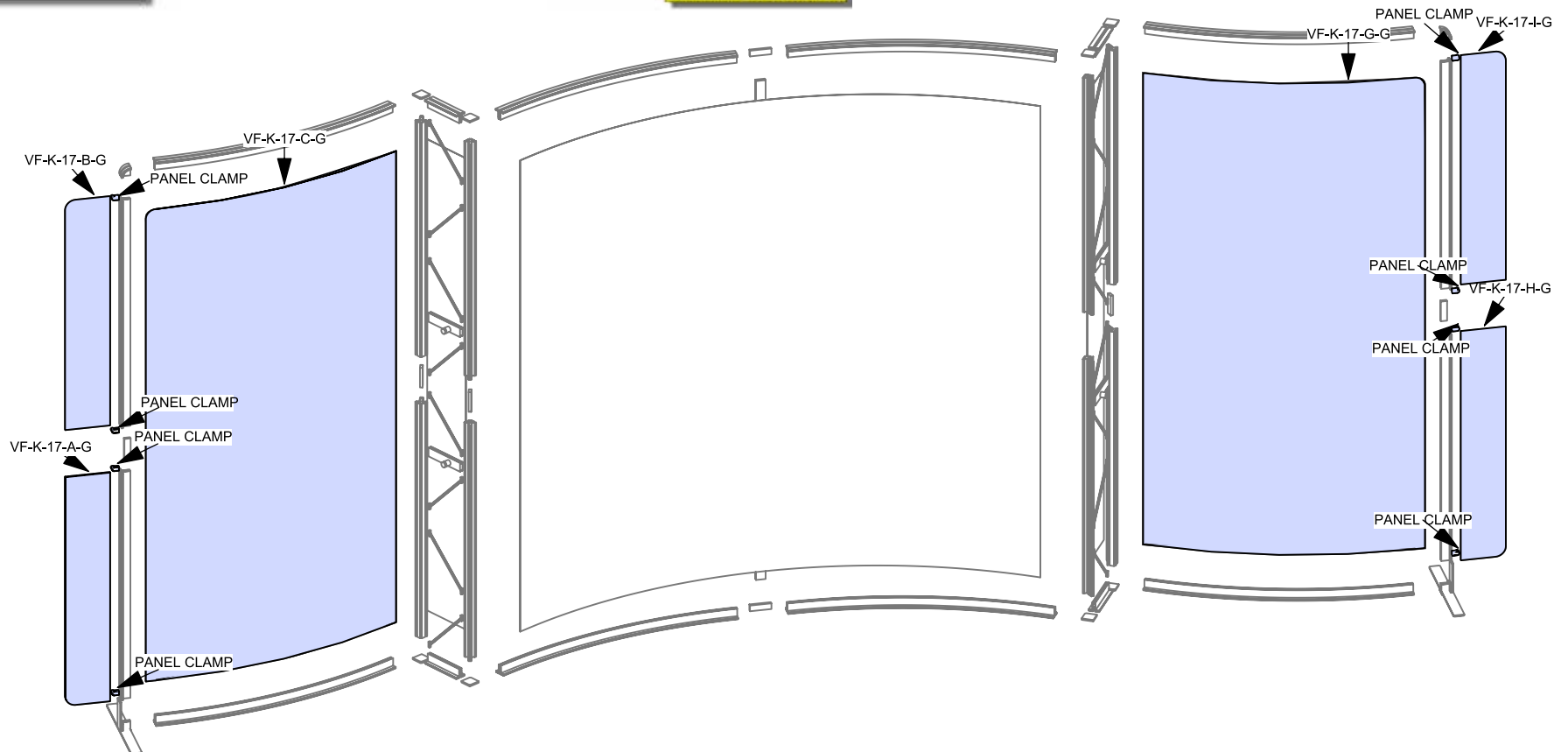
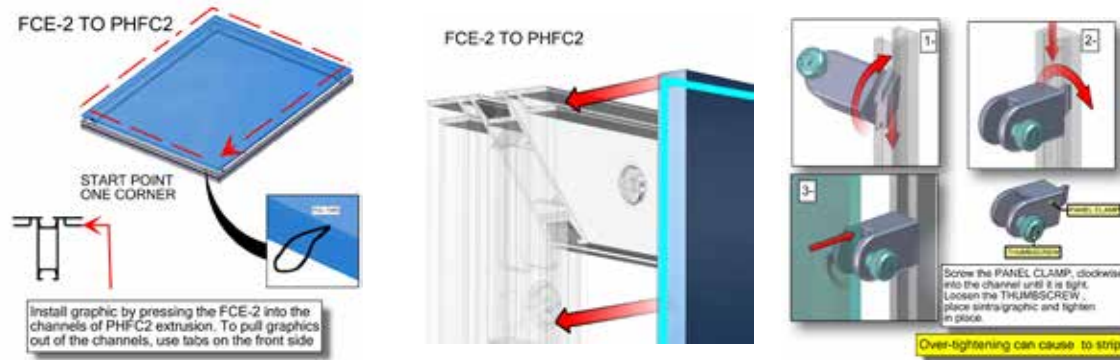
Step 4: Assemble Left and Right End Sections

Arrange pieces on the floor as shown in the diagram below. Assemble frame by securing CB9-R on the top and CB9-S on the bottom to F51 and F34s. When locking be sure to turn each cam a little bit and then go back and tighten to the proper tension. Take care to turn locks only half a turn. Slide the IB2 into the extrusion to connect sides. Tighten to the proper tension to lock extrusions together. To adhere foot to frame, loosen thumbscrews from foot. Slide extrusion into LN-100 groove. Tighten to the proper tension to secure supporting feet.



Step 5: Apply Graphics

Install graphic(s) by pressing the FCE-2 edge of graphic into the channel of the extrusion. Start in upper left corner and insert in remaining corners, then push graphic into each side. Assure graphic is tightly inserted. When taking graphics off, take care to gently pull by attached pull tab. To attach accent wings, screw panel clamps clockwise into the channel until tightened. Loosen the thumbscrew. Place rigid sintra graphics into palce and tighten thumbscrew to secure. Overtightening can strip thumbscrew and damage graphic.



Step 6: Install Literature Racks & Install Lights

To install literature rack, secure LN112 with CKSO cap onto CKSO barrel. Repeat for remaining literature racks. Slide light clip onto each light. Then slide light into the extrusion channel at an angle and gently lower down and repeat for each light.

